

School Transport Programme - Travelwise

Trafinz 17 September 2014

Jacqueline Dawson





Walking School Bus

Rain or Shine

Overview

- School Transport Programme – Travelwise and its Strategic Context
- What is the School Transport Programme -Travelwise?
- How does Travelwise connect Transport to make liveable communities?
- Key findings
- What are the challenges for Auckland?
- Any questions?
- Conclusion.

Strategic Context

- Auckland Plan Vision
- *Auckland - the most liveable city*
- Auckland Transport's Outcome
- *Auckland Transport's System is effective, efficient and safe*

Auckland Transport Strategic Context

Vision

Delivering transport choices to get you where you want, when you want

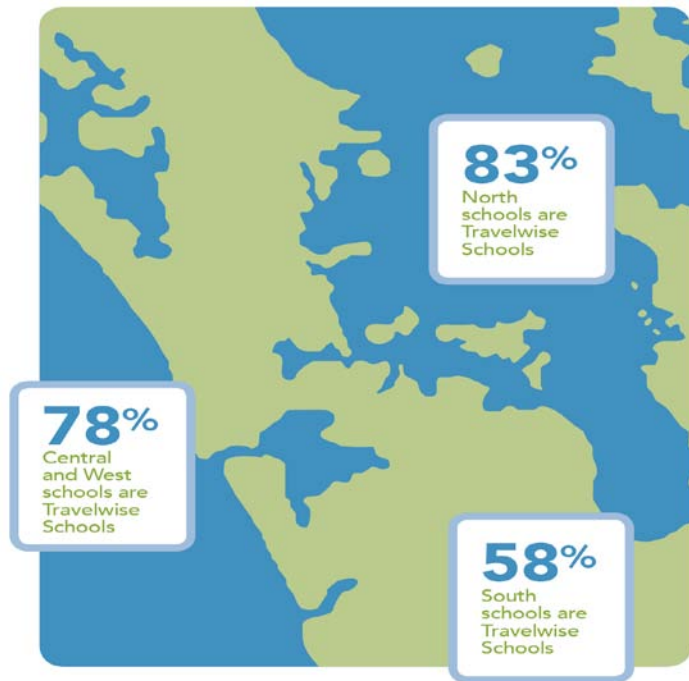


Mission

To deliver effective and innovative transport solutions to customers



What is the School Transport Programme -Travelwise?



- **Partnership approach:** School community, local boards and key stakeholders including NZ Transport Agency and the NZ Police
- Annual investment: **\$12 million**
- **403** Travelwise Schools across the region
- **202,087** students attend a Travelwise School

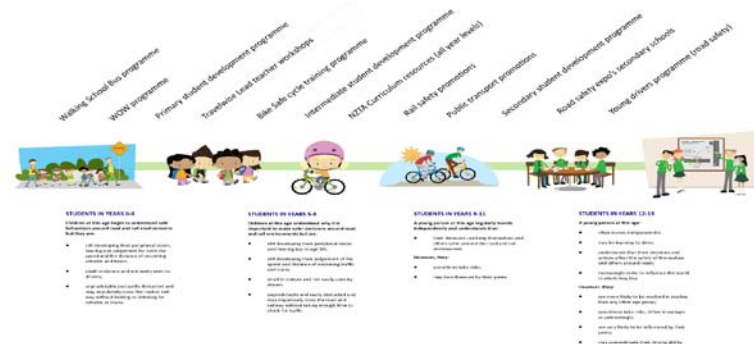
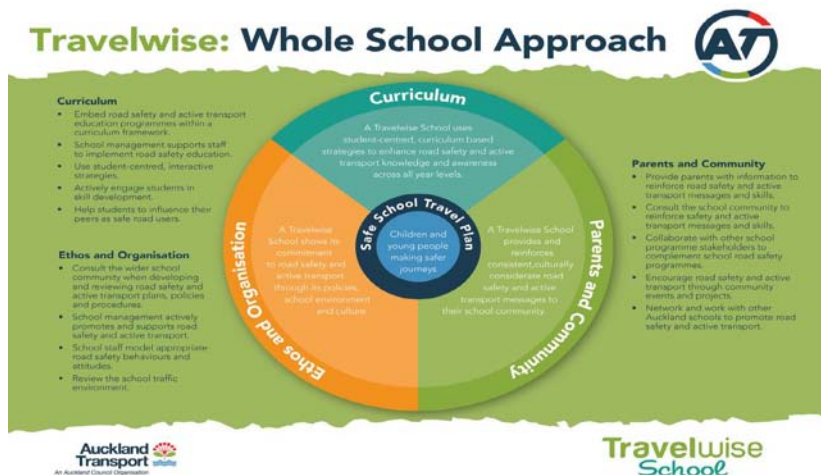
How is Travelwise and the Safe System linked?



What is Travelwise?

Whole School Approach

Travelwise through the years



How does Travelwise connect Transport to liveable communities?

Creating opportunities to walk and to cycle



Walking School Bus

Walking school bus participants



Walking school bus merit scheme



Cross Safely



Auckland Transport
An Auckland Council Organisation



Auckland Transport
An Auckland Council Organisation



Auckland Transport
An Auckland Council Organisation

WOW and Bike Safe programme

WOW



Bike Safe Programme



Be Safe Be Seen and Scoot Skills

Be safe be seen



Scoot skills



Travelwise Tree and Bike Breakfast

Travelwise Tree



Bike Breakfast



Public Transport



Key findings

Graph showing the number of cars removed



2013 results

- 12,736 fewer car trips in morning peak
- 11,992,434 passenger trips (on 499 AT school buses + urban services and commercially operated bus services)
- 9348 students in 93 schools received cycle training

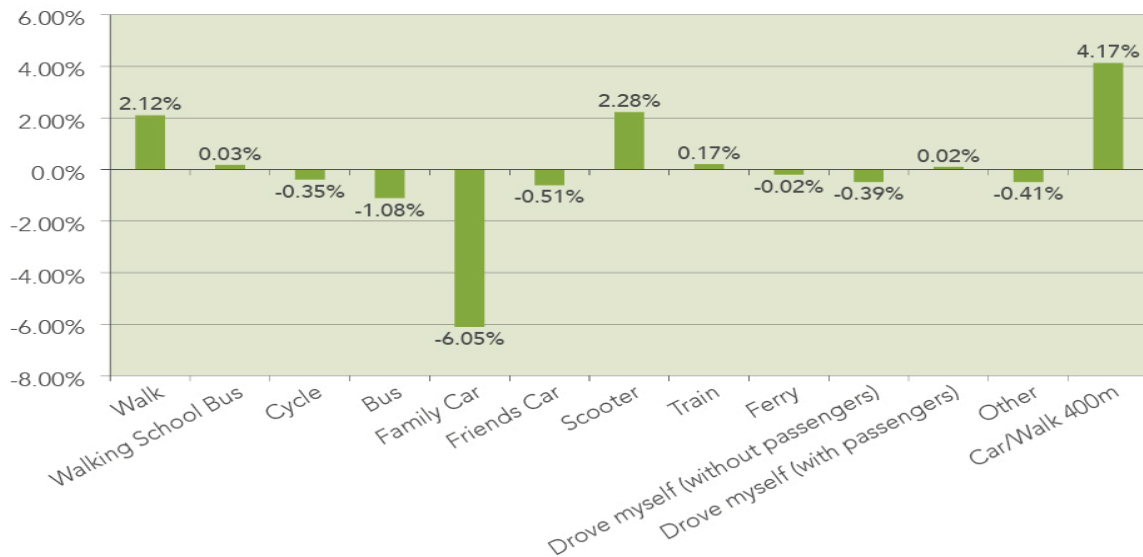
Key findings

- 21% reduction in crashes involving school age pedestrians and cyclists was found at schools with a Safe School Travel Plan, compared to a 5% reduction at schools without a Safe School Travel Plan Source Flow Transportation Specialists.

(2014). Safe school travel plans and road safety research update. Auckland: Commissioned Report.

- Customer perception of road safety is improved around schools. Source: Travelwise Lead teachers and Principals were asked whether they felt Travelwise had made a difference to congestion and safety outside their school. 44.7% of Lead Teachers believe Travelwise has had a positive or very positive impact on the safety of children around their school. 31.2% of Lead Teachers believe Travelwise has a positive or very positive impact on congestion around the school.

Key findings



What are the challenges for Auckland?

- Ensure all Travelwise schools have a clear vision for road safety and sustainable transport at their school, and know what interventions need to take place in order for them to reach their goals
- Ensure there is a stronger focus on recognising the efforts and contribution of the students, staff and volunteers for their contributions to the successful delivery of the Travelwise programme



Focus areas

- **Improve road safety**
particularly for school aged children going to school in central and south Auckland
- **Work with the NZ Police**
- **Better monitoring of perceptions of safety**
- **Encourage active transport**
- **Promote students to use AT HOP card**



Any Questions?

Jacqueline.dawson@aucklandtransport.govt.nz

Conclusion

The School Transport programme - **Travelwise** is a great example of how **transport** can **connect** and make a **community vibrant** and **liveable**. Moving forward the **goal** is to continue to **improve connectivity** to make it **easier** to get to and from **school safely** and **sustainably**.

